



Q4000 Electronic Water Meter

The highly precise lightweight –
so easily installed



Q4000

A highly precise lightweight with a new approach to installation.

Measuring accuracy and low installation overhead are more important today than ever. Reducing water losses takes first priority and, together with faster installation, this meter means double savings.

An unrestricted flow tube, a 10-year battery life and an innovative flangeless design offer unrivalled advantages in water metering. The Q4000 operates on the principle of Faraday's law of induction. In contrast to conventional bulk water meters, it has no moving parts. This minimises pressure loss and the measuring range is commensurately large. The Q4000 is ideal for network management, leak monitoring, and commercial billing.

Measuring accuracy

Unlike other battery-operated magnetic-inductive flow meters, the Q4000 operates at a measuring rate of 0.5 sec. This sets new standards for measuring accuracy - regardless of the direction of water flow.

Durable

The Q4000 has an extremely robust stainless steel housing. Together with its 100 % watertight, fully electronic register, and permanently installed 10-year battery, maintenance-free operation is guaranteed.

Legible

The Q4000 offers two display options. The meter's LC display has large, very legible digits which, in addition to the meter reading, also indicate flow direction, momentary flow rate and fault messages. To simplify meter reading in difficult installation locations, a remote LCD is available for connection to the meter's communication interface. This remote display always shows exactly the same values as the meter's own LCD; it has its own battery power so it does not influence the Q4000's service life.

Data capable

An optical communication interface is a standard feature on the Q4000. This feature prepares the meter for incorporation into wireless reading systems. Consumption and service data, as well as various control signals, can be output from plug-in modules in various data protocols compliant with EN 13757 and ISO/ DIS 22158.

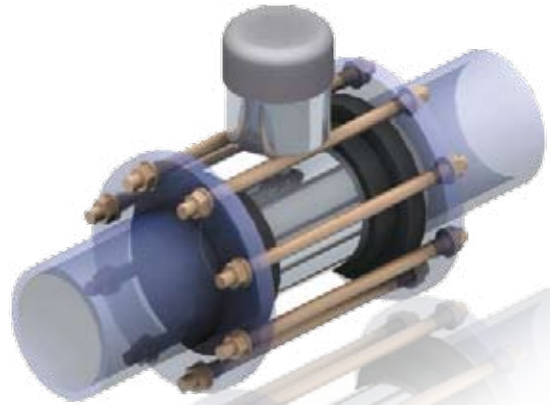




Installation

The installation technique for the Q4000 is truly innovative and permits quick, simple installation. The meter's low weight makes it possible for a single person to install or replace the meter without any type of lift equipment. The Q4000 is delivered complete with all components necessary for installation, you only need your own tools.

The Q4000 can be installed in any orientation and is available in various lengths for WP or WS metering points. No earthing ring is needed either because an earthing element is already built-in. Simply install, that's all.



Technical Data

Q4000

Meter size / Nominal flow rate	Q_3	m ³ /h	40	63	100	160	250	400	630
Nominal size	DN	mm	50	65	80	100	125	150	200
Performance data									
Maximum flow rate	Q_4	m ³ /h	50	79	125	200	313	500	788
Transition flow rate	Q_2	m ³ /h	0.16	0.26	0.40	0.64	1.0	1.6	2.6
Minimum flow rate	Q_1	l/h	0.10	0.16	0.25	0.40	0.3	1.0	1.6
Measuring range	Q_3/Q_1		400	400	400	400	400	400	400
Weight		kg	4.5	5.0	5.5	6.5	7.5	9.5	15
Length									
for WP metering points		mm	200	200	225	250	250	300	350
for WS metering points		mm	270	300	300	360	500	500	—
Battery service life		years	10						
Measuring frequency rate		Hz	2	(one measurement every 0.5 sec)					
Pressure loss over the entire measuring range		bar	< 0.3						
Temperature		°C	max. 50						
Minimum conductivity		µS/cm	50						
Protection class			IP68	(100% watertight)					

Elster Messtechnik GmbH
 Otto-Hahn-Strasse 25
 68623 Lampertheim, Germany

T +49 (0) 62 06 933-0
 F +49 (0) 62 06 933-100
 E messtechnik@de.elster.com
www.elstermesstechnik.com

Q4000_F_03.01e_02/10

Errors and falsities excepted, contents subject to change without notice



Copyright Elster Messtechnik GmbH